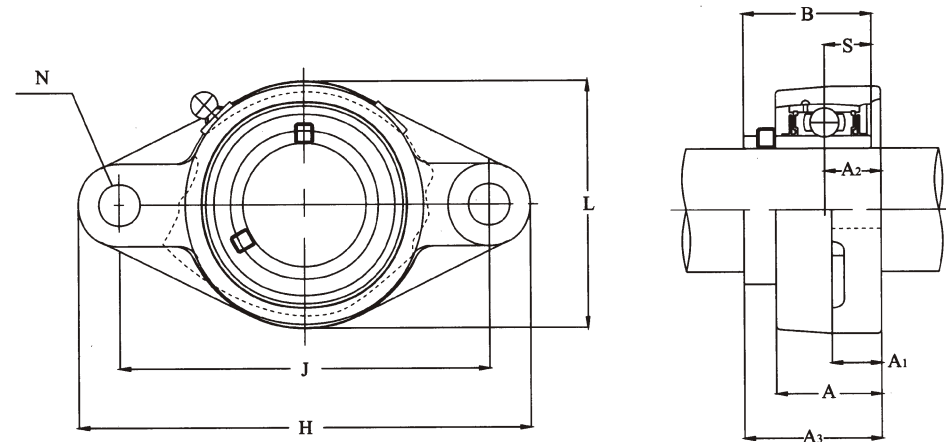
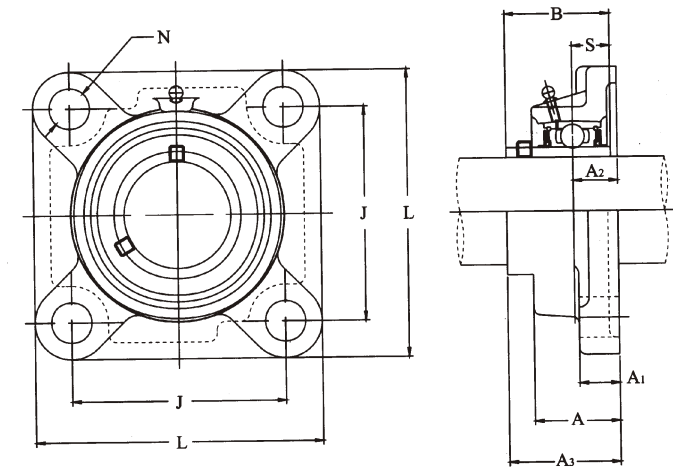


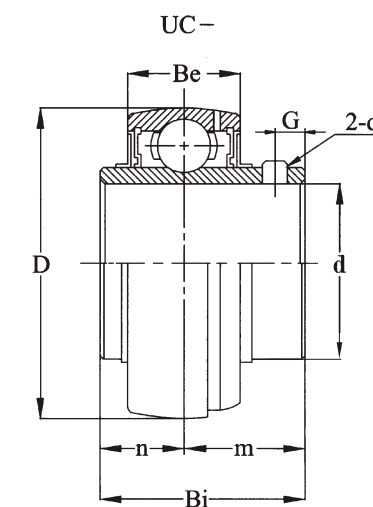
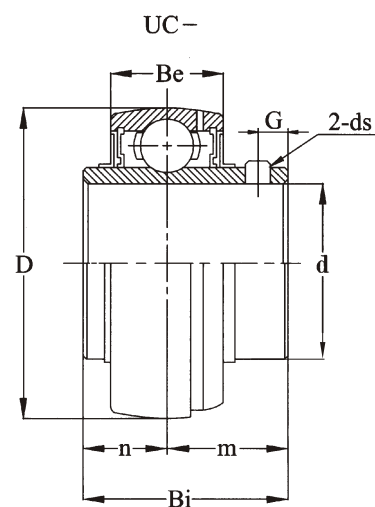
| Shaft Diameter (mm) | UNIT Number | Dimensions (mm) |     |     |    |        |    |    |     |       |       | Weight kg |
|---------------------|-------------|-----------------|-----|-----|----|--------|----|----|-----|-------|-------|-----------|
|                     |             | L               | A   | J   | H1 | H      | N  | N1 | H2  | B     | S     |           |
| 12                  | UCP201      | 127             | 38  | 95  | 15 | 30.20  | 13 | 19 | 62  | 31.00 | 12.70 | 0.70      |
| 15                  | UCP202      | 127             | 38  | 95  | 15 | 30.20  | 13 | 19 | 62  | 31.00 | 12.70 | 0.69      |
| 17                  | UCP203      | 127             | 38  | 95  | 15 | 30.20  | 13 | 19 | 62  | 31.00 | 12.70 | 0.68      |
| 20                  | UCP204      | 127             | 38  | 95  | 15 | 33.30  | 13 | 19 | 65  | 31.00 | 12.70 | 0.68      |
| 25                  | UCP205      | 140             | 38  | 105 | 16 | 36.50  | 13 | 19 | 70  | 34.10 | 14.30 | 0.82      |
|                     | UCP305      | 175             | 45  | 132 | 16 | 45.00  | 17 | 20 | 83  | 38.00 | 15.00 | 1.32      |
| 30                  | UCP206      | 165             | 48  | 121 | 18 | 42.90  | 17 | 21 | 83  | 38.10 | 15.90 | 1.36      |
|                     | UCP306      | 180             | 50  | 140 | 19 | 50.00  | 17 | 20 | 94  | 43.00 | 17.00 | 1.82      |
| 35                  | UCP207      | 167             | 48  | 127 | 19 | 47.60  | 17 | 21 | 94  | 42.90 | 17.50 | 1.73      |
|                     | UCP307      | 210             | 56  | 160 | 21 | 56.00  | 17 | 25 | 105 | 48.00 | 19.00 | 2.50      |
| 40                  | UCP208      | 184             | 54  | 137 | 19 | 49.20  | 17 | 23 | 100 | 49.20 | 19.00 | 2.10      |
|                     | UCP308      | 220             | 60  | 170 | 23 | 60.00  | 17 | 27 | 116 | 52.00 | 19.00 | 3.20      |
| 45                  | UCP209      | 190             | 54  | 146 | 20 | 54.00  | 17 | 23 | 108 | 49.20 | 19.00 | 2.20      |
|                     | UCP309      | 245             | 67  | 190 | 25 | 67.00  | 20 | 30 | 128 | 57.00 | 22.20 | 4.30      |
| 50                  | UCP210      | 206             | 60  | 159 | 22 | 57.20  | 20 | 25 | 114 | 51.60 | 19.00 | 2.70      |
|                     | UCP310      | 275             | 75  | 212 | 28 | 75.00  | 20 | 35 | 143 | 61.00 | 22.00 | 5.80      |
| 55                  | UCP211      | 219             | 60  | 171 | 22 | 63.50  | 20 | 25 | 126 | 55.60 | 22.20 | 3.40      |
|                     | UCP311      | 310             | 80  | 236 | 31 | 80.00  | 20 | 38 | 154 | 66.00 | 25.00 | 7.40      |
| 60                  | UCP212      | 241             | 70  | 184 | 25 | 69.80  | 20 | 25 | 138 | 65.10 | 25.40 | 4.80      |
|                     | UCP312      | 330             | 85  | 250 | 33 | 85.00  | 25 | 38 | 165 | 71.00 | 26.00 | 9.00      |
| 65                  | UCP213      | 265             | 70  | 203 | 27 | 76.20  | 25 | 29 | 150 | 65.10 | 25.40 | 5.70      |
|                     | UCP313      | 340             | 90  | 260 | 36 | 90.00  | 25 | 38 | 174 | 75.00 | 30.00 | 10.20     |
| 70                  | UCP214      | 266             | 72  | 210 | 27 | 79.40  | 25 | 31 | 156 | 74.60 | 30.20 | 6.40      |
|                     | UCP314      | 360             | 90  | 280 | 40 | 95.00  | 27 | 40 | 186 | 78.00 | 33.00 | 12.40     |
| 75                  | UCP215      | 275             | 74  | 217 | 28 | 82.60  | 25 | 31 | 163 | 77.80 | 33.30 | 7.20      |
|                     | UCP315      | 380             | 100 | 290 | 40 | 100.00 | 27 | 40 | 197 | 82.00 | 32.00 | 14.60     |
| 80                  | UCP216      | 292             | 78  | 232 | 30 | 88.90  | 25 | 31 | 175 | 82.60 | 33.30 | 8.70      |
|                     | UCP316      | 400             | 110 | 300 | 45 | 106.00 | 27 | 40 | 209 | 86.00 | 34.00 | 18.10     |
| 85                  | UCP217      | 310             | 83  | 247 | 32 | 95.20  | 25 | 31 | 187 | 85.70 | 34.10 | 11.00     |
|                     | UCP317      | 420             | 110 | 320 | 45 | 112.00 | 33 | 45 | 221 | 96.00 | 40.00 | 21.00     |
| 90                  | UCP218      | 327             | 88  | 262 | 34 | 101.60 | 27 | 33 | 200 | 96.00 | 39.70 | 13.30     |
|                     | UCP318      | 430             | 110 | 330 | 50 | 118.00 | 33 | 45 | 233 | 96.00 | 40.00 | 23.00     |



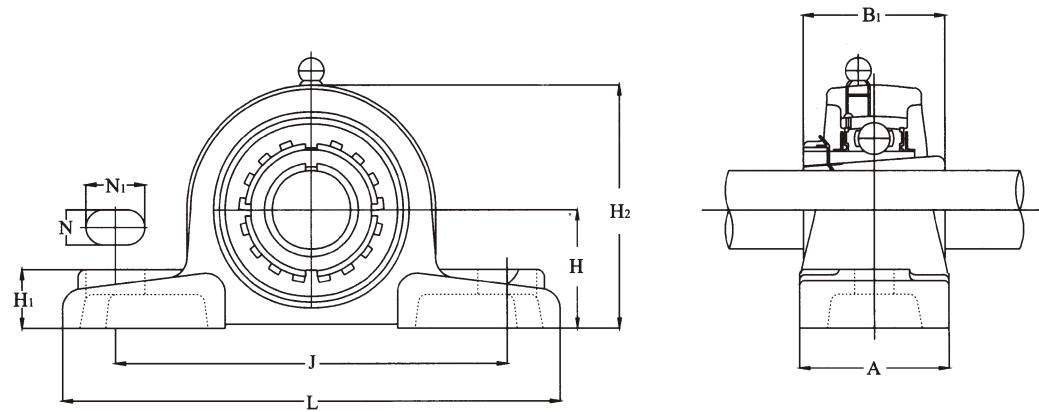
| Shaft Diameter (mm) | UNIT Number | Dimensions (mm) |     |      |     |    |    |    |      |      |      | Weight kg |
|---------------------|-------------|-----------------|-----|------|-----|----|----|----|------|------|------|-----------|
|                     |             | H               | L   | A    | J   | A1 | A2 | N  | A3   | B    | S    |           |
| 12                  | UCFL201     | 113             | 60  | 25.5 | 90  | 12 | 15 | 12 | 33.3 | 31.0 | 12.7 | 0.51      |
| 15                  | UCFL202     | 113             | 60  | 25.5 | 90  | 12 | 15 | 12 | 33.3 | 31.0 | 12.7 | 0.49      |
| 17                  | UCFL203     | 113             | 60  | 25.5 | 90  | 12 | 15 | 12 | 33.3 | 31.0 | 12.7 | 0.48      |
| 20                  | UCFL204     | 113             | 60  | 25.5 | 90  | 12 | 15 | 12 | 33.3 | 31.0 | 12.7 | 0.46      |
| 25                  | UCFL205     | 130             | 68  | 27.0 | 99  | 14 | 16 | 16 | 35.7 | 34.0 | 14.3 | 0.63      |
| 30                  | UCFL206     | 148             | 80  | 31.0 | 117 | 14 | 18 | 16 | 40.2 | 38.1 | 15.9 | 0.95      |
| 35                  | UCFL207     | 161             | 90  | 34.0 | 130 | 16 | 19 | 16 | 44.4 | 42.9 | 17.5 | 1.31      |
| 40                  | UCFL208     | 175             | 100 | 36.0 | 144 | 16 | 21 | 16 | 51.2 | 49.2 | 19.0 | 1.69      |
| 45                  | UCFL209     | 188             | 108 | 38.0 | 148 | 18 | 22 | 19 | 52.2 | 49.2 | 19.0 | 2.10      |
| 50                  | UCFL210     | 197             | 115 | 40.0 | 157 | 18 | 22 | 19 | 54.6 | 51.6 | 19.0 | 2.40      |
| 55                  | UCFL211     | 224             | 130 | 43.0 | 184 | 20 | 25 | 19 | 58.4 | 55.6 | 22.2 | 3.40      |
| 60                  | UCFL212     | 250             | 140 | 48.0 | 202 | 20 | 29 | 23 | 68.7 | 65.1 | 25.4 | 4.30      |
| 65                  | UCFL213     | 258             | 155 | 50.0 | 210 | 24 | 30 | 23 | 69.7 | 65.1 | 25.4 | 5.40      |
| 70                  | UCFL214     | 265             | 160 | 54.0 | 216 | 24 | 31 | 23 | 75.4 | 74.6 | 30.2 | 6.30      |
| 75                  | UCFL215     | 275             | 165 | 56.0 | 225 | 24 | 34 | 23 | 78.5 | 77.8 | 33.3 | 6.90      |
| 80                  | UCFL216     | 290             | 180 | 58.0 | 233 | 24 | 34 | 25 | 83.3 | 82.6 | 33.3 | 8.40      |
| 85                  | UCFL217     | 305             | 190 | 63.0 | 248 | 26 | 36 | 25 | 87.6 | 85.7 | 34.1 | 9.90      |
| 90                  | UCFL218     | 320             | 205 | 68.0 | 265 | 26 | 40 | 25 | 96.3 | 96.0 | 39.7 | 12.40     |



| Shaft Diameter (mm) | UNIT Number | Dimensions (mm) |      |     |    |    |    |      |      |      | Weight kg |
|---------------------|-------------|-----------------|------|-----|----|----|----|------|------|------|-----------|
|                     |             | L               | A    | J   | A1 | A2 | N  | A3   | B    | S    |           |
| 12                  | UCF201      | 86              | 25.5 | 64  | 12 | 15 | 12 | 33.3 | 31.0 | 12.7 | 0.67      |
| 15                  | UCF202      | 86              | 25.5 | 64  | 12 | 15 | 12 | 33.3 | 31.0 | 12.7 | 0.66      |
| 17                  | UCF203      | 86              | 25.5 | 64  | 12 | 15 | 12 | 33.3 | 31.0 | 12.7 | 0.64      |
| 20                  | UCF204      | 86              | 25.5 | 64  | 12 | 15 | 12 | 33.3 | 31.0 | 12.7 | 0.62      |
| 25                  | UCF205      | 95              | 27.0 | 70  | 14 | 16 | 12 | 35.7 | 34.1 | 14.3 | 0.83      |
| 30                  | UCF206      | 108             | 31.0 | 83  | 14 | 18 | 12 | 40.2 | 38.1 | 15.9 | 1.14      |
| 35                  | UCF207      | 117             | 34.0 | 92  | 16 | 19 | 14 | 44.4 | 42.9 | 17.5 | 1.47      |
| 40                  | UCF208      | 130             | 36.0 | 102 | 16 | 21 | 16 | 51.2 | 49.2 | 19.0 | 2.00      |
| 45                  | UCF209      | 137             | 38.0 | 105 | 18 | 22 | 16 | 52.2 | 49.2 | 19.0 | 2.40      |
| 50                  | UCF210      | 143             | 40.0 | 111 | 18 | 22 | 16 | 54.6 | 51.6 | 19.0 | 2.60      |
| 55                  | UCF211      | 162             | 43.0 | 130 | 20 | 25 | 19 | 58.4 | 55.6 | 22.2 | 3.60      |
| 60                  | UCF212      | 175             | 48.0 | 143 | 20 | 29 | 19 | 68.7 | 65.1 | 25.4 | 4.80      |
| 65                  | UCF213      | 187             | 50.0 | 149 | 20 | 30 | 19 | 69.7 | 65.1 | 25.4 | 5.80      |
| 70                  | UCF214      | 193             | 54.0 | 152 | 24 | 31 | 19 | 75.4 | 74.6 | 30.2 | 6.60      |
| 75                  | UCF215      | 200             | 56.0 | 159 | 24 | 34 | 19 | 78.5 | 77.8 | 33.3 | 7.70      |
| 80                  | UCF216      | 208             | 58.0 | 165 | 24 | 34 | 23 | 83.3 | 82.6 | 33.3 | 8.20      |
| 85                  | UCF217      | 220             | 63.0 | 175 | 26 | 36 | 23 | 87.6 | 85.7 | 34.1 | 9.60      |
| 90                  | UCF218      | 235             | 68.0 | 187 | 26 | 40 | 23 | 96.3 | 96.0 | 39.7 | 12.10     |



| Bore Dia. of Bearings |         | UNIT Number | Dimensions |        |       |        |       |        |        |        |       |        |       |        |            |            | Weight |
|-----------------------|---------|-------------|------------|--------|-------|--------|-------|--------|--------|--------|-------|--------|-------|--------|------------|------------|--------|
| d                     |         |             | D          |        | Bi    |        | Be    |        | n      |        | m     |        | G     |        | ds         |            | kg     |
| mm                    | in      |             | mm         | in     | mm    | in     | mm    | in     | mm     | in     | mm    | in     | mm    | in     | mm         | in         |        |
| 20                    |         | UC204       | 47.00      |        | 31.00 |        | 17.00 |        | 12.70  |        | 18.30 |        | 5.00  |        | M6X1.0     |            | 0.16   |
|                       | 3/4     | UC204-12    |            | 1.8504 |       | 1.2205 |       | 0.6693 |        | 0.5000 |       | 0.7205 |       | 0.1969 | 1/4-28UNF  | 1/4-28UNF  | 0.16   |
| 25                    |         | UC205       | 52.00      |        | 34.10 |        | 17.00 |        | 14.30  |        | 19.80 |        | 5.50  |        | M6X1.0     |            | 0.20   |
|                       | 7/8     | UC205-14    |            |        |       |        |       |        |        |        |       |        |       |        |            |            | 0.23   |
|                       | 15/16   | UC205-15    |            | 2.0472 |       | 1.3425 |       | 0.6693 |        | 0.5630 |       | 0.7795 |       | 0.2165 | 1/4-28UNF  | 1/4-28UNF  | 0.21   |
| 30                    | 1       | UC205-16    |            |        |       |        |       |        |        |        |       |        |       |        |            |            | 0.20   |
|                       |         | UC206       | 62.00      |        | 38.10 |        | 19.00 |        | 159.90 |        | 22.20 |        | 6.00  |        | M6X1.0     |            | 0.32   |
|                       | 1~1/8   | UC206-18    |            |        |       |        |       |        |        |        |       |        |       |        |            |            | 0.34   |
| 35                    | 1~3/16  | UC206-19    |            | 2.4409 |       | 1.5000 |       | 0.7480 |        | 0.6260 |       | 0.8740 |       | 0.2362 | 1/4-28UNF  | 1/4-28UNF  | 0.32   |
|                       | 1~1/4   | UC206-20    |            |        |       |        |       |        |        |        |       |        |       |        |            |            | 0.32   |
|                       |         | UC207       | 72.00      |        | 42.90 |        | 20.00 |        | 17.50  |        | 25.40 |        | 6.50  |        | M8X1.0     |            | 0.48   |
| 40                    | 1~1/4   | UC207-20    |            |        |       |        |       |        |        |        |       |        |       |        |            |            | 0.54   |
|                       | 1~5/16  | UC207-21    |            |        |       |        |       |        |        |        |       |        |       |        |            |            | 0.51   |
|                       | 1~3/8   | UC207-22    |            | 2.8346 |       | 1.6890 |       | 0.7874 |        | 0.6890 |       | 1.0000 |       | 0.2559 | 5/16-24UNF | 5/16-24UNF | 0.48   |
|                       | 1~7/16  | UC207-23    |            |        |       |        |       |        |        |        |       |        |       |        |            |            | 0.45   |
| 45                    |         | UC208       | 80.00      |        | 49.20 |        | 21.00 |        | 19.00  |        | 30.20 |        | 8.00  |        | M8X1.0     |            | 0.64   |
|                       | 1~1/2   | UC208-24    |            | 3.1496 |       | 1.9370 |       | 0.8268 |        | 0.7480 |       | 1.1890 |       | 0.3150 | 5/16-24UNF | 5/16-24UNF | 0.68   |
|                       | 1~9/16  | UC208-25    |            |        |       |        |       |        |        |        |       |        |       |        |            |            | 0.65   |
| 50                    |         | UC209       | 85.00      |        | 49.20 |        | 22.00 |        | 19.00  |        | 30.20 |        | 8.00  |        | M8X1.0     |            | 0.68   |
|                       | 1~5/8   | UC209-26    |            |        |       |        |       |        |        |        |       |        |       |        |            |            | 0.78   |
|                       | 1~11/16 | UC209-27    |            | 3.3465 |       | 2.0315 |       | 0.8661 |        | 0.7480 |       | 1.1890 |       | 0.3150 | 5/16-24UNF | 5/16-24UNF | 0.74   |
| 55                    | 1~3/4   | UC209-28    |            |        |       |        |       |        |        |        |       |        |       |        |            |            | 0.70   |
|                       |         | UC210       | 90.00      |        | 51.60 |        | 24.00 |        | 19.00  |        | 32.60 |        | 9.00  |        | M10X1.25   |            | 0.80   |
|                       | 1~7/8   | UC210-30    |            |        |       |        |       |        |        |        |       |        |       |        |            |            | 0.87   |
| 60                    | 1~15/16 | UC210-31    |            | 3.5433 |       | 2.1890 |       | 0.9449 |        | 0.7480 |       | 1.2835 |       | 0.3543 | 3/8-24UNF  | 3/8-24UNF  | 0.82   |
|                       | 2       | UC210-32    |            |        |       |        |       |        |        |        |       |        |       |        |            |            | 0.75   |
|                       |         | UC211       | 100.00     |        | 55.60 |        | 25.00 |        | 12.50  |        | 43.10 |        | 9.00  |        | M10X1.25   |            | 1.11   |
| 65                    | 2       | UC211-32    |            |        |       |        |       |        |        |        |       |        |       |        |            |            | 1.26   |
|                       | 2-1/8   | UC211-34    |            | 3.9370 |       | 3.9370 |       | 0.9843 |        | 0.4291 |       | 1.6969 |       | 0.3543 | 3/8-24UNF  | 3/8-24UNF  | 1.15   |
|                       | 2-3/16  | UC211-35    |            |        |       |        |       |        |        |        |       |        |       |        |            |            | 1.09   |
| 60                    |         | UC212       | 110.00     |        | 65.10 |        | 27.00 |        | 25.40  |        | 39.70 |        | 10.50 |        | M10X1.25   |            | 1.53   |
| 65                    |         | UC213       | 120.00     |        | 65.10 |        | 28.00 |        | 25.40  |        | 39.70 |        | 12.00 |        | M10X1.25   |            | 1.86   |



| Shaft Diameter (mm) | UNIT Number          | Dimensions (mm) |    |     |    |       |    |    |     |    | Weight kg |
|---------------------|----------------------|-----------------|----|-----|----|-------|----|----|-----|----|-----------|
|                     |                      | L               | A  | J   | H1 | H     | N  | N1 | H2  | B1 |           |
| 20                  | <b>UKP205+H2305X</b> | 140             | 38 | 105 | 16 | 36.5  | 13 | 19 | 70  | 35 | 0.87      |
| 25                  | <b>UKP206+H2306X</b> | 165             | 48 | 121 | 18 | 42.9  | 17 | 21 | 83  | 38 | 1.44      |
| 30                  | <b>UKP207+H2307X</b> | 167             | 48 | 127 | 19 | 47.6  | 17 | 21 | 94  | 43 | 1.78      |
| 35                  | <b>UKP208+H2308X</b> | 184             | 54 | 137 | 19 | 49.2  | 17 | 23 | 100 | 46 | 2.20      |
| 40                  | <b>UKP209+H2309X</b> | 190             | 54 | 146 | 20 | 54.0  | 17 | 23 | 108 | 50 | 2.40      |
| 45                  | <b>UKP210+H2310X</b> | 206             | 60 | 159 | 22 | 57.2  | 20 | 25 | 114 | 55 | 2.90      |
| 50                  | <b>UKP211+H2311X</b> | 219             | 60 | 171 | 22 | 63.5  | 20 | 25 | 126 | 59 | 3.50      |
| 55                  | <b>UKP212+H2312X</b> | 241             | 70 | 184 | 25 | 69.8  | 20 | 25 | 138 | 62 | 4.80      |
| 60                  | <b>UKP213+H2313X</b> | 265             | 70 | 203 | 27 | 76.2  | 25 | 29 | 150 | 65 | 5.70      |
| 65                  | <b>UKP215+H2315X</b> | 275             | 74 | 217 | 28 | 82.6  | 25 | 31 | 163 | 73 | 7.50      |
| 70                  | <b>UKP216+H2316X</b> | 292             | 78 | 232 | 28 | 88.9  | 25 | 31 | 175 | 78 | 9.44      |
| 75                  | <b>UKP217+H2317X</b> | 310             | 83 | 247 | 28 | 95.2  | 25 | 31 | 187 | 82 | 11.55     |
| 80                  | <b>UKP218+H2318X</b> | 327             | 88 | 262 | 30 | 101.6 | 27 | 33 | 200 | 86 | 13.37     |

